

- ① SECURITY SYSTEM MONITOR, REFER TO DETAIL L/M2.01 FOR MOUNTING
- ② LIGHT FIXTURE CENTERED IN CEILING.
- ③ TRAFFIC COUNTER WITH WHITE FINISH INSTALLED AT CEILING.
- ④ WALL SCONCE, REFER TO INTERIOR ELEVATIONS FOR MOUNTING HEIGHT AND LOCATION. REFER TO ELEC DRAWINGS FOR POWER REQUIREMENTS.
- ⑤ ~~NOT USED~~
- ⑥ OFFICE TASK LIGHTING PROVIDED W/ OFFICE FURNITURE PACKAGE. REFER TO ELEC. DWGS. FOR REQUIREMENTS.
- ⑦ SUSPENDED LIGHT FIXTURE ON ADJUSTABLE CABLE, BOTTOM TO BE SET @ 8'-0" A.F.F. NOTE: A MINIMUM GAP OF 9" MUST BE MAINTAINED BETWEEN FIXTURE AND CEILING.
- ⑧ FAUX SPEAKER SCREEN FOR TRANSFER OF SENSORMATIC ALARM SOUND. REFER TO SCHEDULE G/A00.04 FOR FINISH.
PINK
- ⑨ ~~LED LIGHTING INSTALLED INSIDE OF PINK OUTFITTING CENTER, REFER TO DETAIL G/A0.04 FOR PLACEMENT. REFER TO ELECTRICAL DRAWINGS FOR POWER REQUIREMENTS.~~
- ⑩ ~~2" DIA. FITTING ROOF PENDANT LIGHT FIXTURE. B.O. FIXTURE TO BE HUNG AT 2' FROM CEILING.~~
- ⑪ ~~PINK CASHIER PENDANT LIGHT FIXTURE. B.O. FIXTURE TO BE HUNG AT 2' FROM CEILING.~~
- ⑫ BUILD LETTER PINK SIGNAGE AT BACK WALL OF FOCAL. REFER TO DETAIL L/M2.01 FOR DETAILS. REFER TO ELECTRICAL DRAWINGS FOR POWER REQUIREMENTS.

- ② LED LIGHTING IN PINK ARMCHIRE FIXTURE. REFER TO DETAIL L2/A10.01 AND ELECTRICAL DRAWINGS FOR POWER REQUIREMENTS.
- ② WALL MOUNTED NEON SIGN, REFER TO ELECTRICAL DRAWINGS FOR POWER REQUIREMENTS. REFER TO DETAIL K2/A10.01 AND INTERIOR ELEVATIONS FOR MOUNTING AND ACCESS REQUIREMENTS.
- ② PINK POWDER ROOM PENDANT FIXTURE TO BE MOUNTED ABOVE LAVATORY. REFER TO DETAIL L2/A10.01 FOR P.F.F.
- ② SPARKLE LIGHT PINK SIGNS - 16 BACK WALL OF FOCAI. REFER TO DETAIL L2/A10.01 FOR DETAILS. REFER TO ELECTRICAL DRAWINGS FOR POWER REQUIREMENTS.
- VSL
- ① TRAFFIC COUNTER WITH BLACK FINISH INSTALLED AT UNDERSIDE OF SOFFIT. SEE DETAIL J/A08.15.
- ② BEAUTY SHELF LIGHTING - SEE DETAIL C/A11.03
- ③ NOT USED
- ③ VSS FITTING ROOM ABOVE PENDANT MOUNTED WITH BOTTOM AT 7' 1" A.F.F.
- ③ NOT USED
- ③ NOT USED
- ③ NOT USED
- ③ DIRECTIONAL LIGHT FIXTURE RECESSED IN VERTICAL SURFACE. REFER TO ELEVATION FOR MORE INFORMATION.
- ③ NOT USED

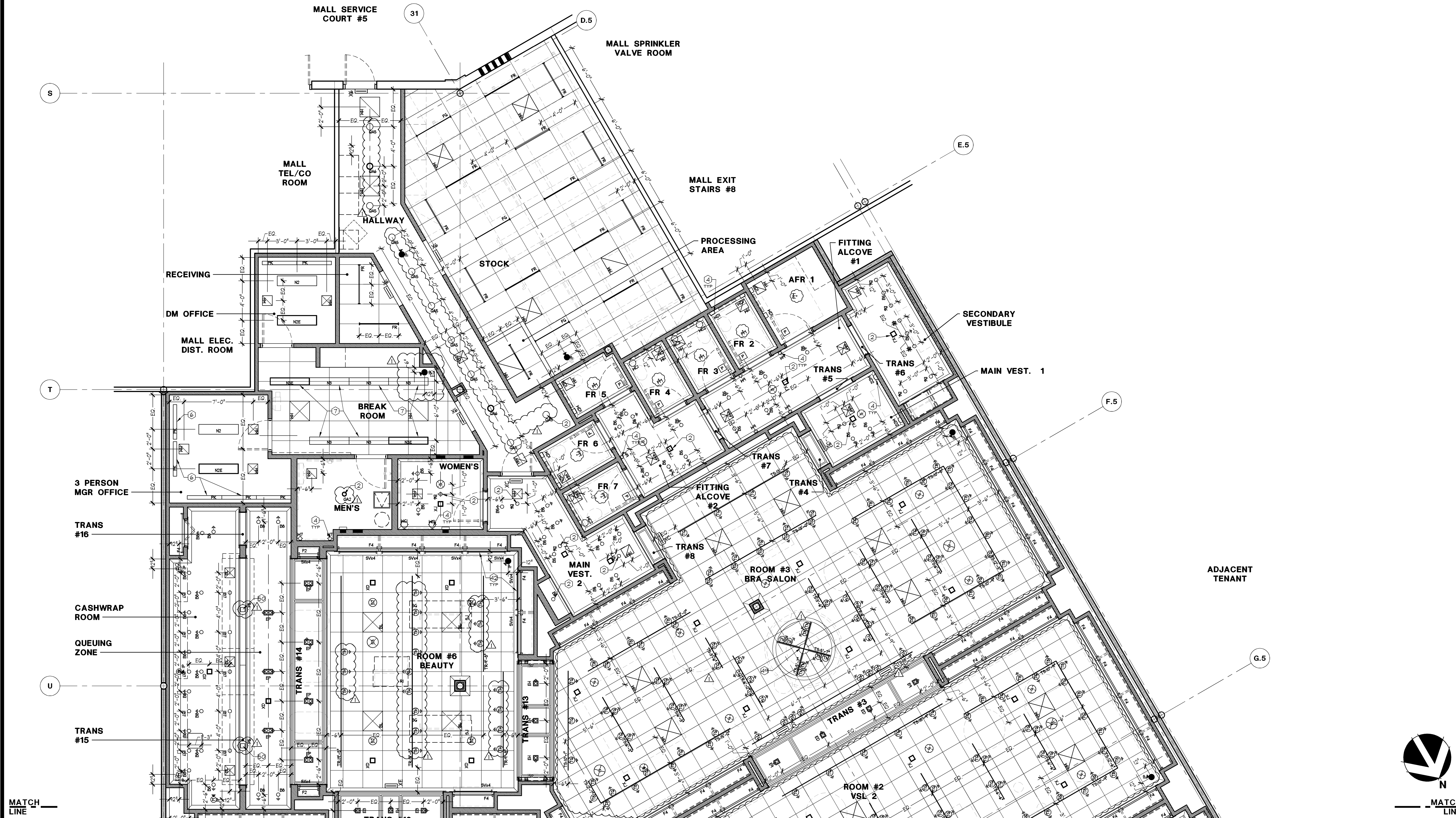
49 TRACK LIGHTING ATTACHED TO DRUM SHADE FIXTURE ON SITE. REFER TO
DETAIL D/A11.01.

50 VSS CASHWRAP TABLE LAMP. REFER TO ELEC DRAWINGS FOR POWER.

NOTE: ALL SECURITY CAMERAS AND DOMES ARE RECESSED FIXTURE WHICH ARE PROVIDED WITH WHITE TRIM RINGS. G.C. TO PAINT THE RING TO MATCH THE CEILING FINISH WHEN LOCATED IN A DARK CEILING ONLY.

REFER TO SHEET A00.04
FOR GENERAL NOTES AND
CEILING LEGEND
REFER TO SHEET E04.01
FOR LIGHTING SCHEDULE

	D



REFLECTED LIGHTING PLAN

1/4" = 1'-0"

A

Lbrands
STORE DESIGN & CONSTRUCTION
Three Limited Parkway • Columbus, Ohio 43230
Telephone: 614.415.7000 • Fax: 614.415.7349

THESE DRAWINGS AND SPECIFICATIONS ARE PREPARED FOR USE ON A SPECIFIC PROJECT. THEY ARE NOT INTENDED FOR OR USED FOR ANY OTHER PROJECT. THEY ARE NOT TO BE REPRODUCED OR COPIED FOR ANY OTHER PROJECT WITHOUT THE WRITTEN AGREEMENT OF THE ENGINEER. ANY REPRODUCTION OR COPIING OF THESE DRAWINGS AND SPECIFICATIONS FOR ANY OTHER PROJECT IS A VIOLATION OF THE ENGINEER'S PROFESSIONAL ETHICS AND MAY BE SUBJECT TO LEGAL ACTION. THE ENGINEER ASSUMES NO LIABILITY FOR ANY DAMAGE OR INJURY TO PERSONS OR PROPERTY ARISING FROM THE USE OF THESE DRAWINGS AND SPECIFICATIONS. THE USER OF THESE DRAWINGS AND SPECIFICATIONS SHALL BE RESPONSIBLE FOR OBTAINING ALL NECESSARY PERMITS AND APPROVALS FROM THE APPROPRIATE AGENCIES. THE ENGINEER'S RESPONSIBILITY IS LIMITED TO THE DESIGN AND CONSTRUCTION OF THE PROJECT AS SHOWN ON THESE DRAWINGS AND SPECIFICATIONS. THE ENGINEER DOES NOT WARRANT THE ACCURACY OR COMPLETENESS OF THE INFORMATION PROVIDED HEREON. THE USER OF THESE DRAWINGS AND SPECIFICATIONS SHALL BE RESPONSIBLE FOR OBTAINING ALL NECESSARY PERMITS AND APPROVALS FROM THE APPROPRIATE AGENCIES. THE ENGINEER'S RESPONSIBILITY IS LIMITED TO THE DESIGN AND CONSTRUCTION OF THE PROJECT AS SHOWN ON THESE DRAWINGS AND SPECIFICATIONS. THE ENGINEER DOES NOT WARRANT THE ACCURACY OR COMPLETENESS OF THE INFORMATION PROVIDED HEREON.

PROJECT INFORMATION:

0105000587

VICTORIA'S SECRET

NORTH POINT MALL

SPACE #1050

1000 NORTH POINT CIRCE2

ALPHARETTA, GA 30022

SCOPE:

DESIGN TYPE:

LSDC PROJECT #:

FULL REMODEL

NMA GENERATION:

00059876 1A/E PROJECT #:

PKG II

SPRING 2015

1 40332

REVISIONS:

REQUIRED BY: _____ DATE: _____

BID ADDENDUM - LANDLORD COMMENTS
* MASTER UPDATES (1515-01 & 015-4) 01/02/2015

ELITE CONSTRUCTION GROUP
LAKE JACKSON, TX
PHONE: 979-285-0712
NOTE: THESE PRINTS HAVE BEEN
REDUCED BY 50 PERCENT. SCALE
WILL BE 50 PERCENT OF WHAT IS
NOTED ON PLANS

DATE ISSUED: 09/19/14
DESIGNED BY: CN
DRAWN BY: MJN
CHECKED BY: JM/SKM

REFLECTED LIGHTING PLAN

DRAWING NUMBER:

A04.02